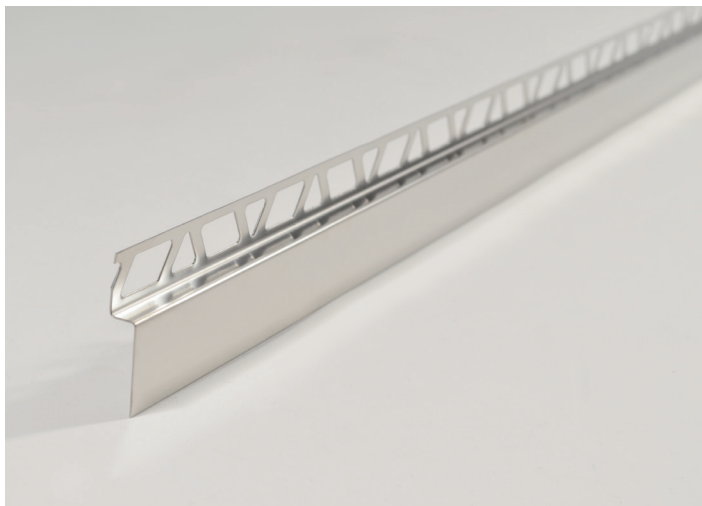


SHOWERTEC STKF

PRODUCT DESCRIPTION



Showertec STKF

The SHOWERTEC STK range includes a series of profiles dedicated to the shower area. They are products designed to simplify the installation phase. The STKF profiles act as a transition between the sloping tiled shower tray and the cladding. The latter can be integrated with its STKP front profile to obtain a homogeneous and optimal finish thanks to the clean line of the installation. The Showertec STK profiles create bathroom environments with a minimalist and modern design, obtaining floor-level showers without obstacles and without architectural barriers.

Available in right and left version.

They can be combined with the frontal profile STKP or STKR to obtain a clean and minimal design.

TECHNICAL FEATURES

Length: 1,35 m



SLOPE = 2%



Article	HxB mm	Material	Finish	Pc
STKF35/80IS135	8x35	Stainless Steel	Brushed	1
STKF35/100IS135	10x35	Stainless Steel	Brushed	1
STKF35/125IS135	12,5x35	Stainless Steel	Brushed	1
STKF48/80IS135	8x48	Stainless Steel	Brushed	1
STKF48/100IS135	10x48	Stainless Steel	Brushed	1
STKF48/125IS135	12,5x48	Stainless Steel	Brushed	1

APPLICATION

1. Cut the profile STKF at the desired length;
2. Apply the tile adhesive to the surface where the profile will be laid and position it by pressing it so that it is embedded in;
3. Lay the tiles spreading the adhesive over the entire surface using the full bed technique and taking care to leave a 2mm joint;
4. Clean any glue residue from the profile before it dries;
5. Grout carefully covering all the joints and clean the profile of all residues before they dry.

CLEANING AND MAINTENANCE

Do not use abrasive detergents for cleaning.
The profile does not require any particular care or maintenance.

